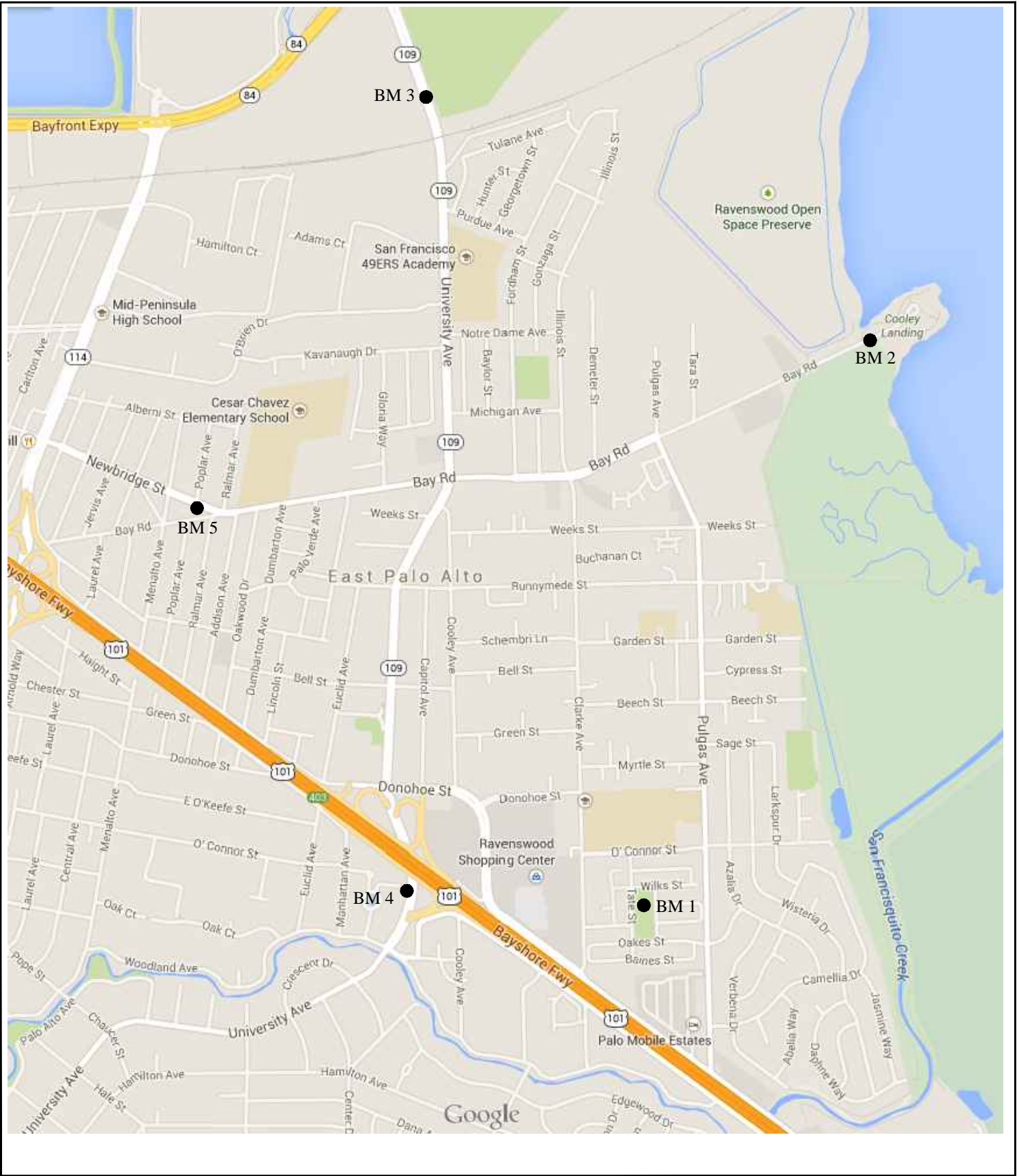


T:\702-RAVENSWOOD\702-013 EPA MONUMENTS\Survey\Master Survey Drawings\MONUMENT EXHIBITS.dwg 11-13-14 08:28:20 AM pbsinger



WILSEY ■■ HAM

3130 La Selva Street, Suite 100, San Mateo, CA 94403
Phone 650-349-2151 Fax 650-345-4921

PROJECT NUMBER: 702-013	CITY OF EAST PALO ALTO MONUMENTS	DATE: 11/12/14
EXHIBIT BM KEY MAP		SCALE: N.T.S.
		SHEET 1 OF 6

T:\702-RAVENSWOOD\702-013 EPA MONUMENTS\Survey\Master Survey Drawings\Control Drawings\MONUMENT EXHIBITS.dwg 11-13-14 08:28:47 AM pbusinger

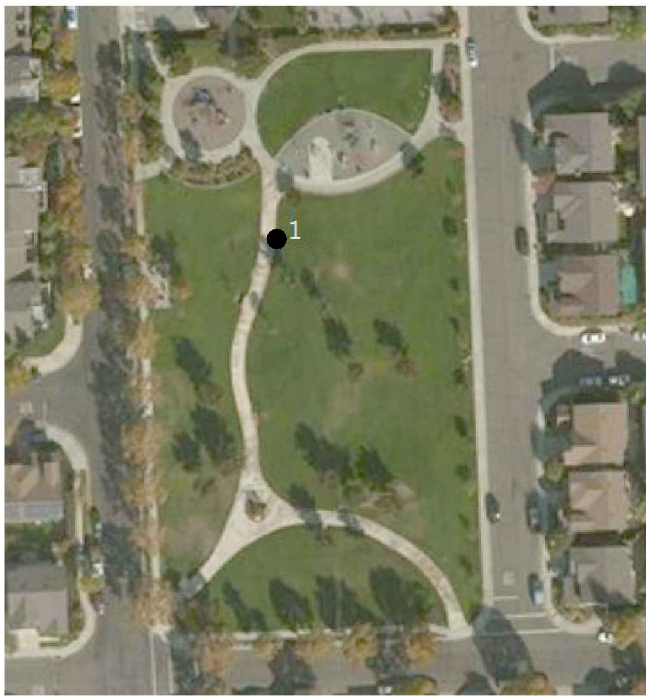
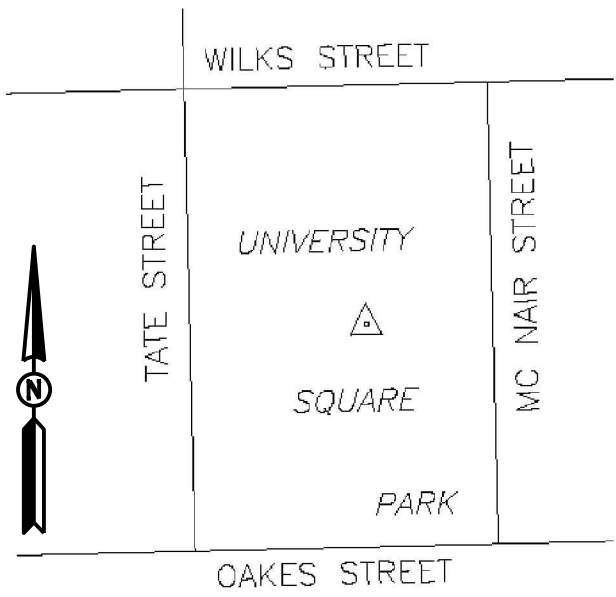
CITY OF EAST PALO ALTO BENCH MARK
BM 1

NAME	NORTHING (USft)	EASTING (USft)	ELEVATION (NAVD 88, USft)
BM 1	1993704.80	6087885.94	13.17

The horizontal coordinates are California State Plane Coordinates, zone III, NAD 83(2011). The elevation was produced using National Geodetic Survey Height Modernization Points.

DESCRIPTION

Driven stainless steel rod in sleeve monument in grade box (marked Survey Monument EPA BM) in the lawn in University Square Park at Tate and Oakes Streets in the City of East Palo Alto located at east side of a concrete path



NOTE: MONUMENT WAS SET IN AUGUST 2014

WILSEY  HAM

3130 La Selva Street, Suite 100, San Mateo, CA 94403
Phone 650-349-2151 Fax 650-345-4921

PROJECT NUMBER: 702-013	CITY OF EAST PALO ALTO MONUMENTS	DATE: 11/12/14
EXHIBIT BM 1		SCALE: N.T.S.
		SHEET 2 OF 6

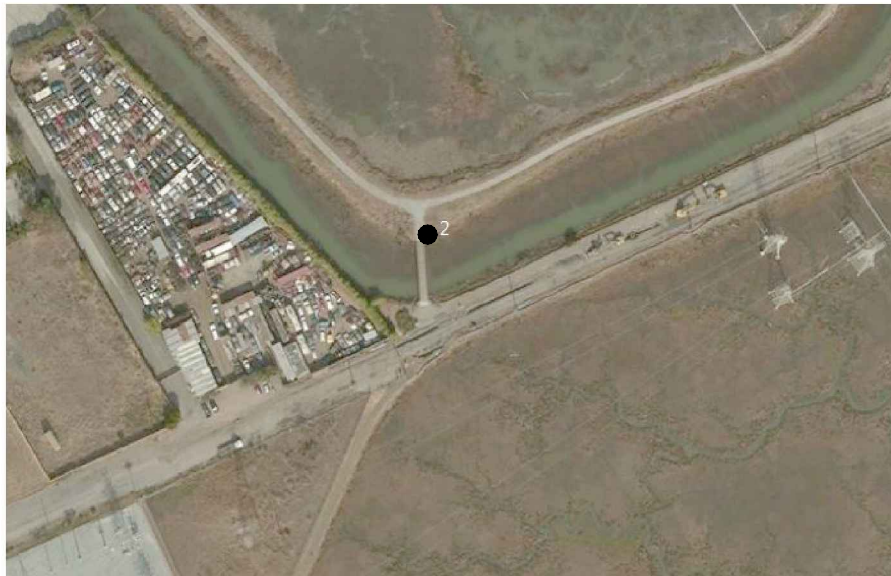
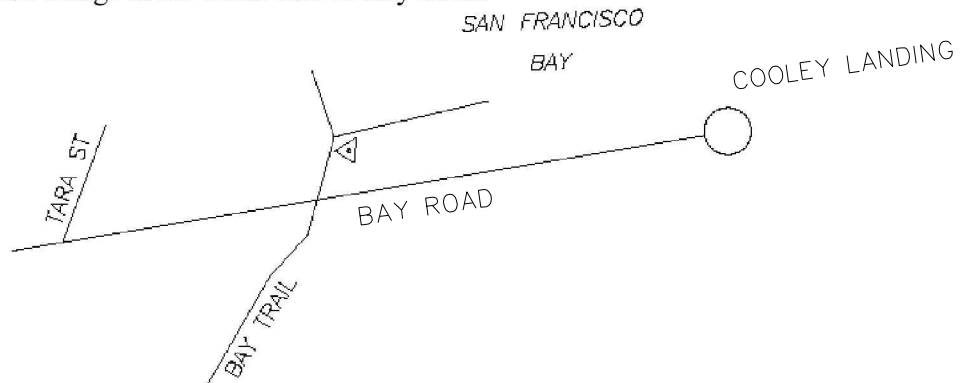
CITY OF EAST PALO ALTO BENCH MARK BM 2

NAME	NORTHING (USft)	EASTING (USft)	ELEVATION (NAVD 88, USft)
BM 2	1999609.22	6089767.25	10.06

The horizontal coordinates are California State Plane Coordinates, zone III, NAD 83(2011). The elevation was produced using National Geodetic Survey Height Modernization Points.

DESCRIPTION

A 2" aluminum disc stamped "East Palo Alto Bench Mark" in wetlands on the northeasterly headwall of a Bay Trail bridge at the north side of Bay Road.



NOTE: MONUMENT WAS SET IN AUGUST 2014

WILSEY HAM

3130 La Selva Street, Suite 100, San Mateo, CA 94403
Phone 650-349-2151 Fax 650-345-4921

PROJECT NUMBER:
702-013

CITY OF EAST PALO ALTO
MONUMENTS

DATE: 11/12/14

SCALE: N.T.S.

SHEET 3 OF 6

EXHIBIT BM 2

T:\702-RAVENSWOOD\702-013 EPA MONUMENTS\Survey\Master Survey Drawings\Control Drawings\MONUMENT EXHIBITS.dwg 11-13-14 08:30:57 AM pbusinger

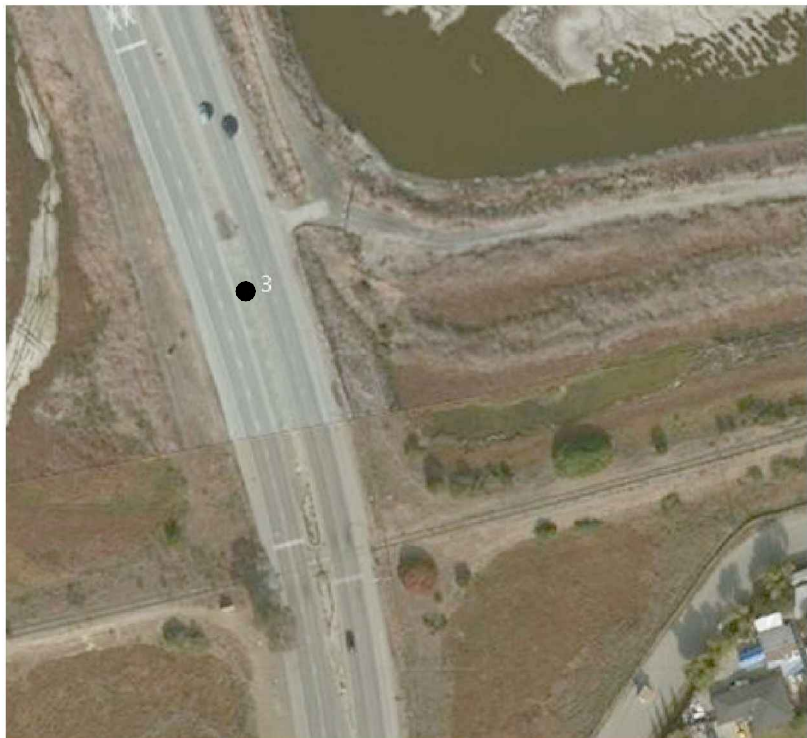
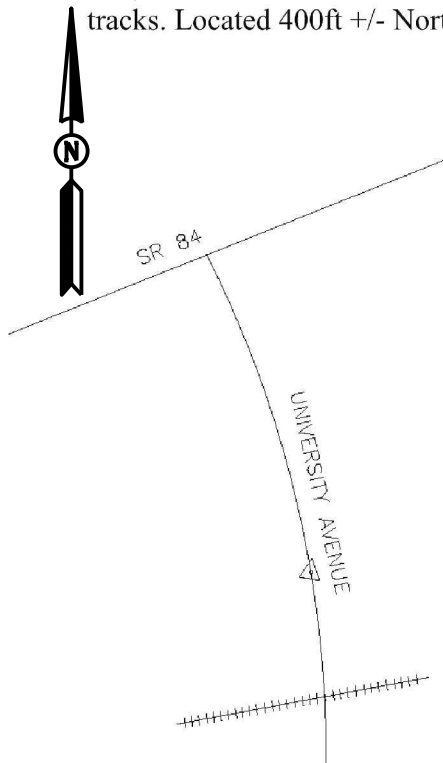
CITY OF EAST PALO ALTO BENCH MARK BM 3

NAME	NORTHING (USft)	EASTING (USft)	ELEVATION (NAVD 88, USft)
BM 3	2002206.13	6085811.80	9.78

The horizontal coordinates are California State Plane Coordinates, zone III, NAD 83(2011). The elevation was produced using National Geodetic Survey Height Modernization Points.

DESCRIPTION

Driven stainless steel rod in sleeve monument in grade box (marked Survey Monument EPA BM) in the concrete median of University Avenue between SR 84 and the Union Pacific Railroad tracks. Located 400ft +/- North of Railroad.



NOTE: MONUMENT WAS SET IN AUGUST 2014

WILSEY ■■ HAM

3130 La Selva Street, Suite 100, San Mateo, CA 94403
Phone 650-349-2151 Fax 650-345-4921

PROJECT NUMBER:
702-013

CITY OF EAST PALO ALTO
MONUMENTS

DATE: 11/12/14

SCALE: N.T.S.

SHEET 4 OF 6

EXHIBIT BM 3

T:\702-RAVENSWOOD\702-013 EPA MONUMENTS\Survey\Master Survey Drawings\Control Drawings\MONUMENT EXHIBITS.dwg 11-13-14 08:33:54 AM plusinger

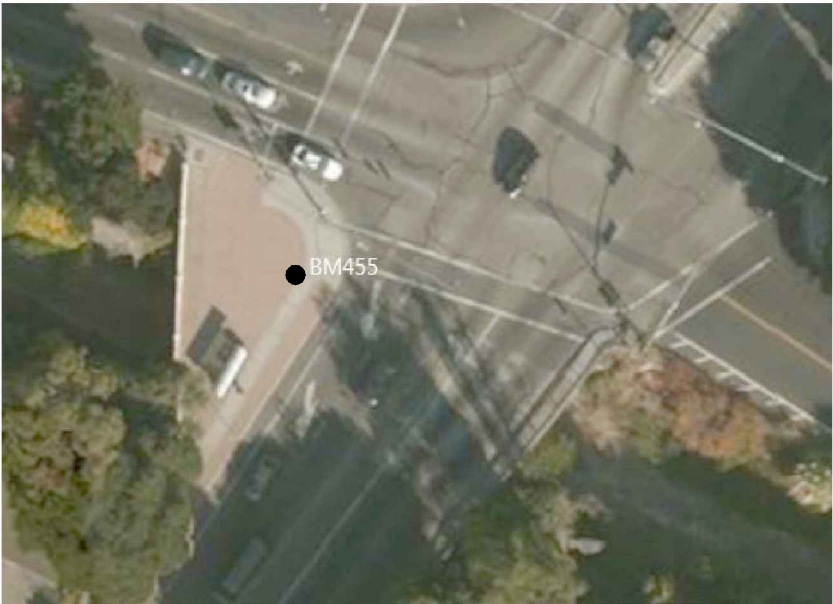
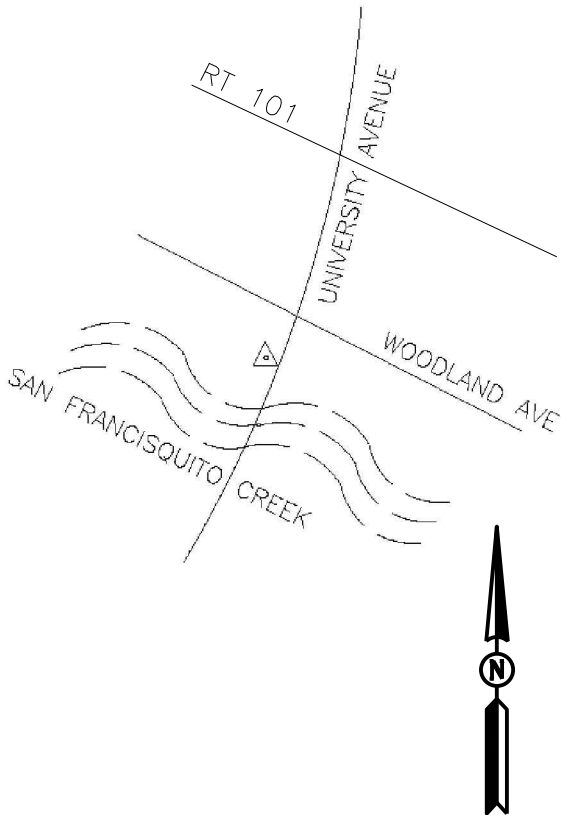
**CITY OF EAST PALO ALTO BENCH MARK
BM 4**

NAME	NORTHING (USft)	EASTING (USft)	ELEVATION (NAVD 88, USft)
BM 4	1993379.43	6085090.94	37.21


The horizontal coordinates are California State Plane Coordinates, zone III, NAD 83(2011). The elevation was produced using National Geodetic Survey Height Modernization Points.

DESCRIPTION

A brass disc in the walkway in the northeast quadrant of the University Avenue Bridge over San Francisquito Creek. It is 35 feet easterly of a 3.3 tall concrete headwall and 19 feet southerly of a traffic light pole. This is Santa Clara Valley Water District Bench Mark BM455.



NOTE: MONUMENT WAS RECOVERED IN AUGUST 2014

WILSEY  **HAM**

3130 La Selva Street, Suite 100, San Mateo, CA 94403
Phone 650-349-2151 Fax 650-345-4921

PROJECT NUMBER: 702-013	CITY OF EAST PALO ALTO MONUMENTS	DATE: 11/12/14
EXHIBIT BM 4		SCALE: N.T.S.
		SHEET 5 OF 6

T:\702-RAVENSWOOD\702-013 EPA MONUMENTS\Survey\Master Survey Drawings\Control Drawings\MONUMENT EXHIBITS.dwg 11-13-14 08:34:22 AM pbusinger

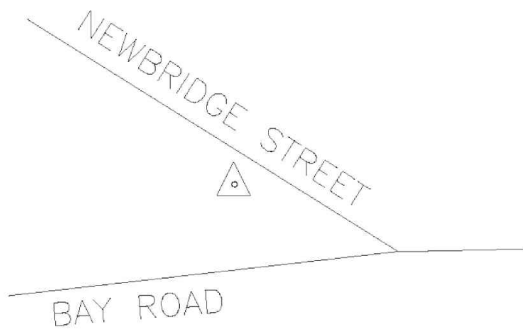
**CITY OF EAST PALO ALTO BENCH MARK
BM 5**

NAME	NORTHING (USft)	EASTING (USft)	ELEVATION (NAVD 88, USft)
BM 5	1998092.34	6083303.85	16.81

The horizontal coordinates are California State Plane Coordinates, zone III, NAD 83(2011). The elevation was produced using National Geodetic Survey Height Modernization Points.

DESCRIPTION

Driven stainless steel rod in sleeve monument in grade box (marked Survey Monument EPA BM) in landscaping at south edge of Newbridge Street sidewalk near intersection with Bay Road and 100' westerly of bus stop.



NOTE: MONUMENT WAS SET IN AUGUST 2014

WILSEY  HAM

3130 La Selva Street, Suite 100, San Mateo, CA 94403
Phone 650-349-2151 Fax 650-345-4921

PROJECT NUMBER: 702-013	CITY OF EAST PALO ALTO MONUMENTS	DATE: 11/12/14
EXHIBIT BM 5		SCALE: N.T.S.
		SHEET 6 OF 6