



Your Tax Dollars At Work

CITY OF EAST PALO ALTO



FEDERAL HIGHWAY BRIDGE PROGRAM



UNIVERSITY AVENUE OVERCROSSING

YEAR OF COMPLETION: **2024**

BE **WORK ZONE** ALERT

What happened in July 2024

- Grading Falsework at Abutments & Bents
- Concrete Placement of Soffit & Stem Walls
- Placement of Soffit/Stem Rebar & Pot-Tensioning Ducts

What is coming up in the next few months?

- Bridge Deck Construction
- Northbound 101 Off-Ramp Construction
- Begin Construction of Bike Trail Nearby University Ave/ Donohoe St

Project Information and Challenges

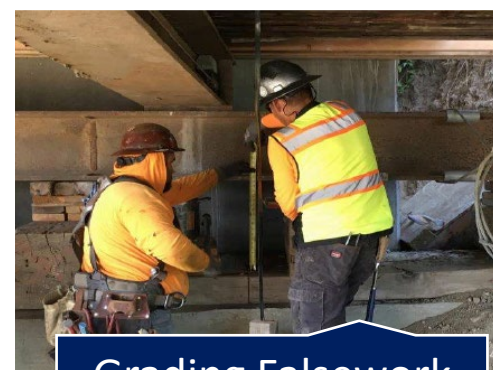
- Performing Deck Concrete Placement in Two Halves Due to Volume of Work
- Weekend Ramp Closure Work Window While Maintaining Pedestrian Access
- Coordination Between Other Projects In Immediate Vicinity



Deck Rebar Placement



Tensioning Falsework Bracing



Grading Falsework Bents