



Surveillance Cameras and Automated License Plate Recognition (ALPR)

Enhancing Community Safety through Advanced
Technology

September 17th, 2024

OBJECTIVES & RECOMMENDATION



- Discuss the use of surveillance cameras on City properties
- Discuss the use of Flock Automated License Plate Recognition technology in East Palo Alto
- Receive a resolution from the City Council:
 - Authorizing the City Manager to install surveillance cameras at all City buildings, pedestrian/bicycle overcrossings, and City parks
 - Authorizing the City Manager to enter into a one-year ALPR pilot program with Flock Technology to provide fixed ALPR cameras





Surveillance cameras

2022

- City Council authorized surveillance cameras at Jack Farrell Park, Martin Luther King Jr. Park, and the Pedestrian Overcrossing
- Juganu smart fixtures (MLK / POC)
 - Lighting
 - WiFi/5G
 - Video surveillance
- Staff seeks authority to expand cameras to other City facilities



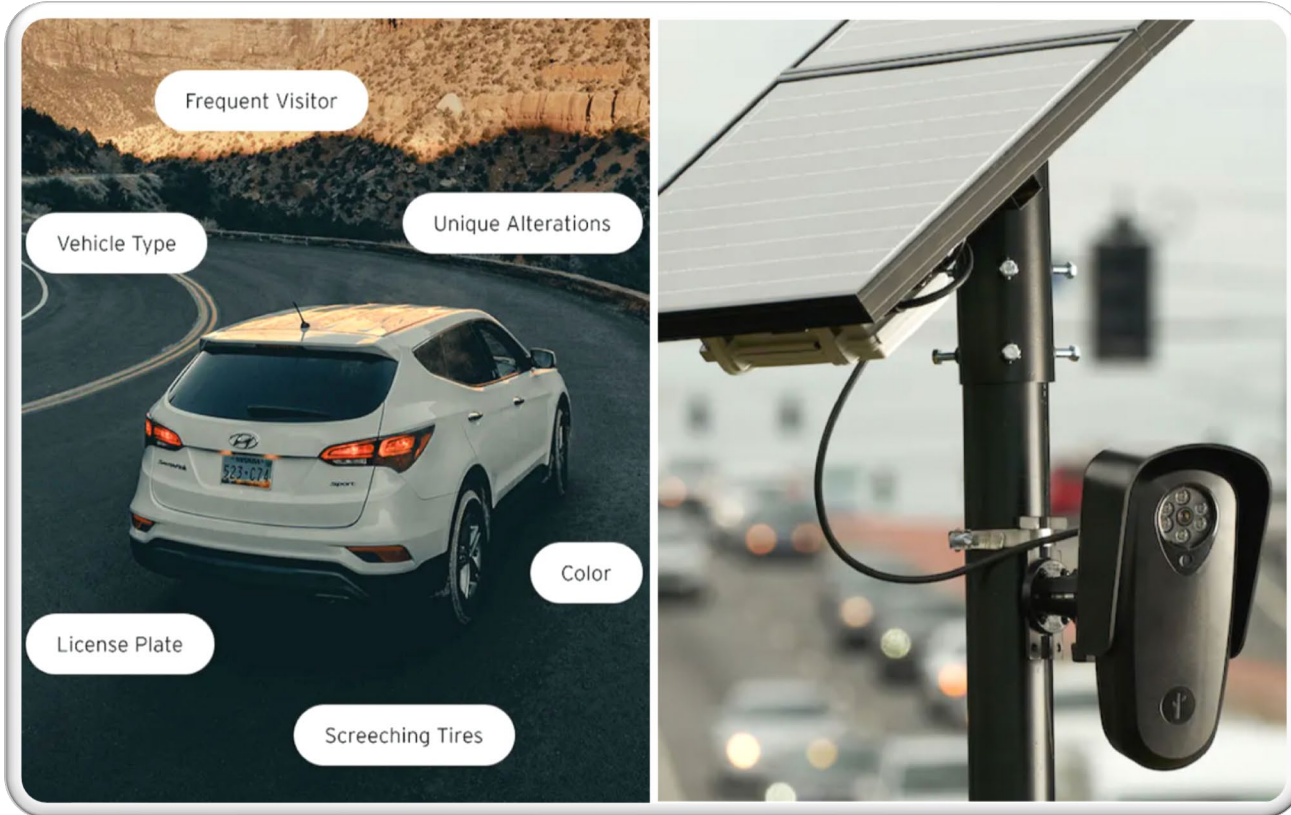


What Are FLOCK Cameras?

Automated License Plate Readers (ALPRs) with advanced analytics.

How They Work: Camera's capture and read license plates, which are then analyzed using sophisticated software.

- Searchable database of vehicle photos
- Capacity to partner with other Flock clients inside of California to expand the temporary database
- Proven to be an effective and reliable investigative tool





Why East Palo Alto needs FLOCK Cameras

- **Enhanced Public Safety:** Helps in identifying suspects.
- **Crime Reduction:** Deterrent effect on criminal activities
- **Improved Emergency Response:** Rapid identification of vehicles involved in crimes.





Arguments Against ALPR

- Privacy concerns: Tracking and mass surveillance
- Potential for abuse: Tracking, targeting, selling data
- Chilling effect: Deterring people from participating in legal activities
- Data security risks: Hackers stealing data
- Lack of regulation and oversight: Critics argue that clear rules must be in place to manage the program to prevent abuse and overreach
- Negative impact on marginalized communities
- Erosion of anonymity: Fear of tracking





DRAFT - EPAPD Lexipol Policy- ALPRs (428)

ADMINISTRATION

- **ALPR Technology:** Used for detecting license plates and supporting law enforcement tasks.
- **Management:** Administration Division Commander oversees installation, maintenance, and data access.
- **Day-to-Day Operation:** Managed by designated personnel.

TRAINING

- **Training Officer:** Ensure members receive approved ALPR system training.

POLICY

- **Data Use:** ALPR data for official use only, respecting public privacy.

OPERATIONS

- **Usage Restrictions:** ALPRs are for official law enforcement business only.
- **Routine and Investigative Use:** Can be used in routine patrols or criminal investigations.
- **Training Requirement:** Complete approved training to operate ALPRs.
- **Data Verification:** Verify ALPR responses via CLETS if possible.

COMPLIANCE

- **Monthly audits:** Ensure users are complying with policies and procedures

Policy
428

East Palo Alto Police Department
East Palo Alto Police Department

Automated License Plate Readers (ALPRs)

428.1 PURPOSE AND SCOPE

[Best Practice]

The purpose of this policy is to provide guidance for the capture, storage and use of digital data obtained through the use of Automated License Plate Reader (ALPR) technology.

428.2 ADMINISTRATION

[Best Practice]

The ALPR technology, also known as License Plate Recognition (LPR), allows for the automated detection of license plates. It is used by the East Palo Alto Police Department to convert data associated with vehicle license plates for official law enforcement purposes, including identifying stolen or wanted vehicles, stolen license plates and missing persons. It may also be used to gather information related to active warrants, homeland security, electronic surveillance, suspect interdiction and stolen property recovery.

All installation and maintenance of ALPR equipment, as well as ALPR data retention and access, shall be managed by the Administration Division Commander. The Administration Division Commander will assign members under his/her command to administer the day-to-day operation of the ALPR equipment and data.

428.2.1 ALPR ADMINISTRATOR

[State]

The Administration Division Commander shall be responsible for developing guidelines and procedures to comply with the requirements of Civil Code § 1798.90.5 et seq. This includes, but is not limited to (Civil Code § 1798.90.51; Civil Code § 1798.90.53):

- (a) A description of the job title or other designation of the members and independent contractors who are authorized to use or access the ALPR system or to collect ALPR information.
- (b) Training requirements for authorized users.
- (c) A description of how the ALPR system will be monitored to ensure the security of the information and compliance with applicable privacy laws.
- (d) Procedures for system operators to maintain records of access in compliance with Civil Code § 1798.90.52.
- (e) The title and name of the current designee in overseeing the ALPR operation.
- (f) Working with the Custodian of Records on the retention and destruction of ALPR data.
- (g) Ensuring this policy and related procedures are conspicuously posted on the department's website.

428.3 OPERATIONS

[State]

Flock login screen 1

The screenshot displays the Flock login interface. At the top, a dark green navigation bar contains the following elements: a user profile icon, a search bar, and menu items for Alerts, Map, Devices, Sharing, Insights, and Admin. On the right side of this bar, the text 'Planning Portal' is visible, along with notification, help, and user icons.

Below the navigation bar, the main interface is divided into a left sidebar and a main content area. The sidebar includes sections for 'CAMERAS (5277/5277)', 'IMAGES', 'LICENSE PLATE', 'STATE (0/53)', and 'BODY (0/16)'. The 'CAMERAS' section is expanded, showing options for 'All Cameras', 'Public Cameras', and 'Private Cameras'. The 'LICENSE PLATE' section is also expanded, showing options for 'All Plates', 'Regular Plates', 'Temporary Plates', and 'No Plates'. A 'License Plate' button is visible in the sidebar.

The main content area features a search bar with a 'Search' button and a 'Lookup Tool' button. Below the search bar, there are date and time filters: '09/17/2024 8:30 AM' and '09/17/2024 10:30 AM'. To the right of these filters are buttons for 'Last 12 hrs', 'Last 24 hrs', 'Last 36 hrs', and 'Last 48 hrs'. A 'Search Reason' input field and a 'Search Now' button are also present.

A white dialog box titled 'Disclaimer' is overlaid on the main content area. The text inside the dialog box reads: 'By accepting, you are agreeing that you will not use any Flock Safety technology (software, hardware, or otherwise) to investigate, interrogate, detain, detect, or arrest persons for immigration enforcement purposes.' An 'Accept' button is located at the bottom right of the dialog box.

Flock login screen 2

The screenshot displays the Flock login screen 2 interface. At the top, a green navigation bar contains the following elements: a home icon, a search icon, and menu items for Search, Alerts, Map, Devices, Sharing, Insights, and Admin. On the right side of the navigation bar, the text "Planning Portal" is displayed, along with notification, help, and user profile icons.

Below the navigation bar, the main interface is divided into a left sidebar and a main content area. The sidebar contains a "Hide" button at the top, followed by a "CAMERAS (5277/5277)" section with a "Camera Map" button. Underneath are radio button options for "All Cameras", "Public Cameras", and "Private Cameras". The "IMAGES" section is collapsed with a "+" sign. The "LICENSE PLATE" section is expanded with a "-" sign, showing a checkbox for "Override Confidence Thresholds" and a "License Plate" button. Below this are checkboxes for "Partial Plate Search", "All Plates", "Regular Plates", "Temporary Plates", and "No Plates". The "STATE (0/53)" and "BODY (0/16)" sections are also collapsed with "+" signs.

The main content area features a search interface. It includes a date range selector with "09/17/2024 8:30 AM" and "09/17/2024 10:30 AM" separated by "To..." and a "+" icon. To the right are four time range buttons: "Last 12 hrs", "Last 24 hrs", "Last 36 hrs", and "Last 48 hrs". Below these is a search input field containing "EP24-0001" and a "Search Now" button. A teal information banner at the bottom of the main content area reads: "Select your search filters, search reason and click 'Search Now' to begin."



Addressing Privacy Concerns

- Flocks maintains Objectivity, Ethics and Integrity.
 - ✓ Data Security: Encrypted, agency-owned, not shared
 - ✓ Auditability: Access is required for public safety reasons
 - ✓ Short Retention: Data stored for 30 days
 - ✓ Transparency: Public portal for last 30 days of activity
 - ✓ Public Education: Assure our community and reduce the chilling effect
- It is NOT:
 - Facial recognition
 - Predictive policing
 - Connected to DMV registration information
 - Holding personal identifying of ANY kind





Thank you

Jeff Liu
Chief Of Police