

**SITE PLAN NOTES**

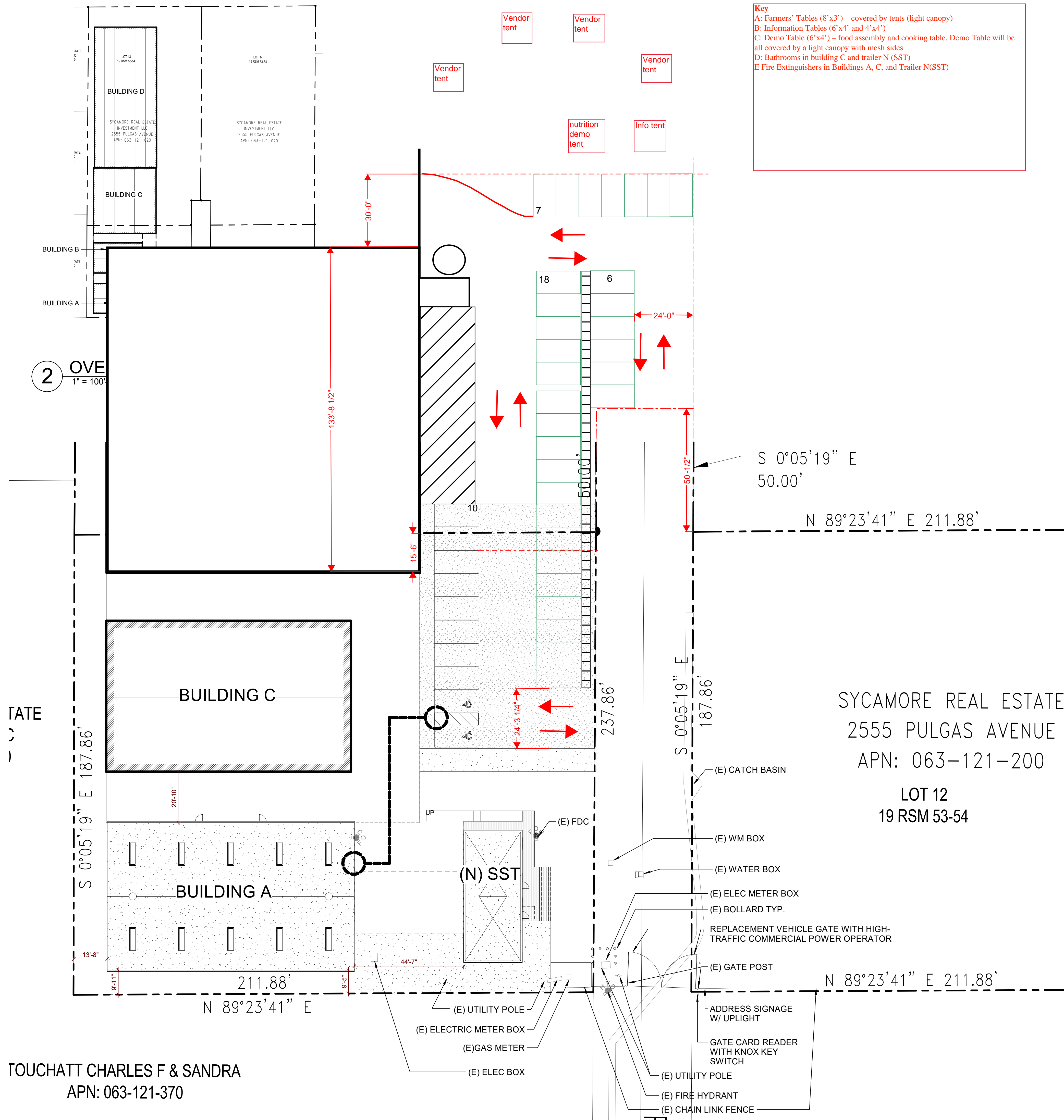
1. SEE CIVIL DRAWINGS FOR UNDERGROUND UTILITIES AND GRADING.
2. SEE ELECTRICAL DRAWINGS FOR EXTERIOR BUILDING LIGHTING.
3. FOR ACCESSIBLE PARKING AND STRIPING DETAILS, SEE AS-401.
4. WALKWAYS AND SIDEWALKS ON ACCESSIBLE ROUTES OF TRAVEL ARE CONTINUOUSLY ACCESSIBLE. HAVE MAX 1/2" CHANGES IN ELEVATION OR PROVIDE CURB RAMPS COMPLYING WITH CBC 11B-406. ARE MINIMUM 48" WIDE, WHERE NECESSARY TO CHANGE ELEVATION AT A SLOPE EXCEEDING 5% OR CROSS SLOPE STEEPER THAN 1:48 SHALL HAVE PEDESTRIAN RAMPS COMPLYING WITH CBC 11B-405. FOR ADA STALL NOTES AND DETAILS SEE AS-401.
5. MAXIMUM PERMITTED SLOPE OF ACCESSIBLE PARKING SPACES IS 2% IN ANY DIRECTION.

ISSUES	DATE
PERMIT SET	08/10/2018

**SITE PLAN LEGEND**

- PROPERTY LINE, LIMIT OF WORK, UNO
- LEED BOUNDARY LINE
- ACCESSIBLE PATH OF TRAVEL
- SITE EGRESS PATH
- SETBACK AND EASEMENT LINES, SEE NOTES
- +XXX.XX' ELEVATION RELATIVE TO CIVIL DATUM
- ACCESSIBLE ENTRY
- FIRE HYDRANT, SCD
- SP\_WARF HYDRANT, SCD
- FREE STANDING FIRE DEPARTMENT CONNECTION, SCD

REVISION LIST	DATE
---------------	------



**1 SITE PLAN**  
1" = 20'-0"

**SYCAMORE**  
2555 Pulgas Ave  
East Palo Alto CA  
94303  
KEYPLAN

**APPROVED**  
Menlo Park Fire Protection District  
Bureau of Fire Protection & Life Safety

**REVIEWED**  
By Danielle Espinoza at 7:40 am, Jan 26, 2021

PROJECT NO.: 18028.00
DATE: 08/10/2018
SCALE: As indicated
SHEET TITLE:
<b>SITE PLAN</b>
SHEET NO.:
<b>AS-101</b>

8/13/2018 1:39:39 PM

All drawings and written material appearing herein constitute original and unpublished work of the Architect/Engineer and may not be duplicated, used or disclosed without consent of Architect/Engineer.

If this drawing is not 30"x42", then the drawing has been revised from its original size. Notes scales must be adjusted. This line should be equal to one inch.